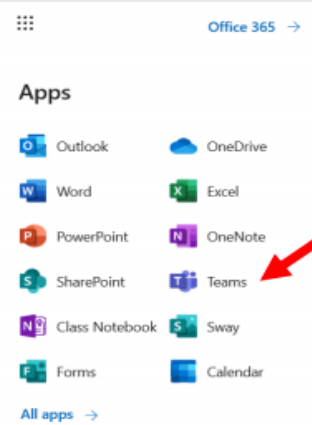
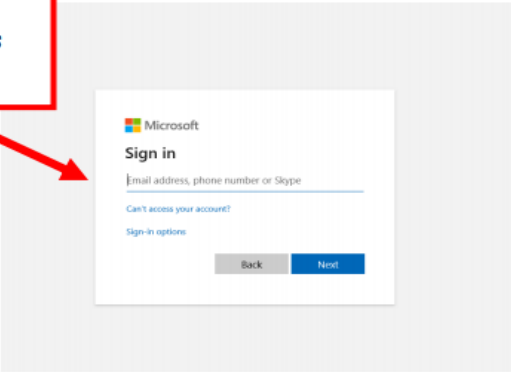
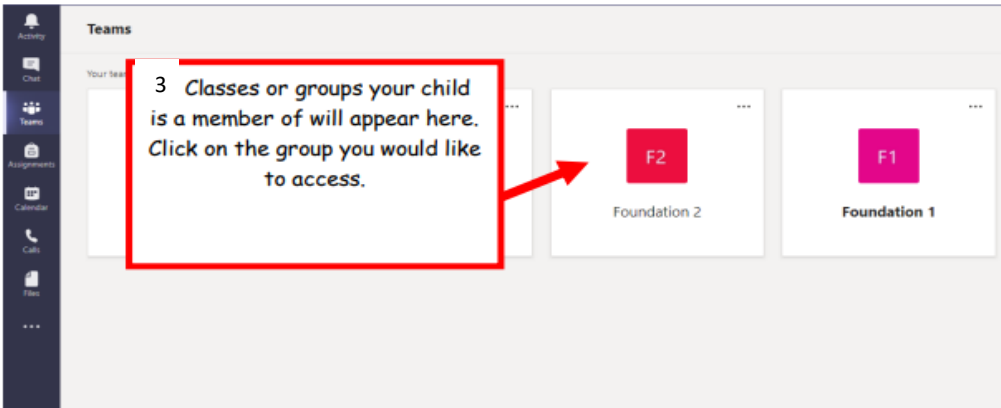


Guide to using Microsoft Teams

1. Go to office.com to sign in using your child's email address and password.

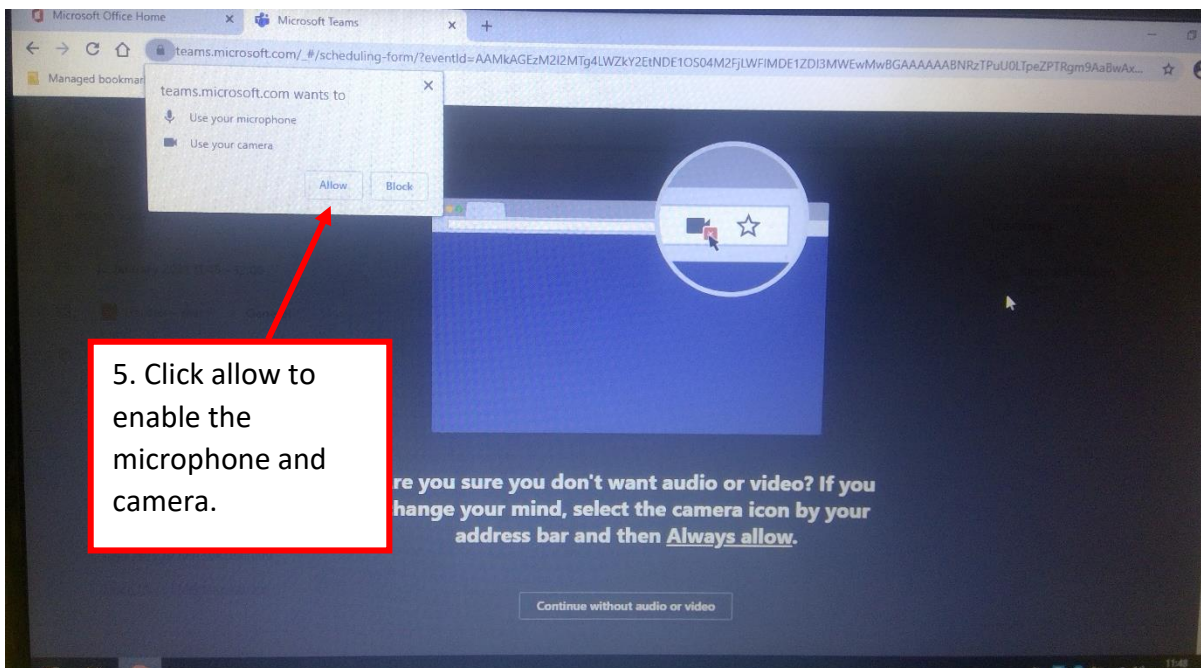
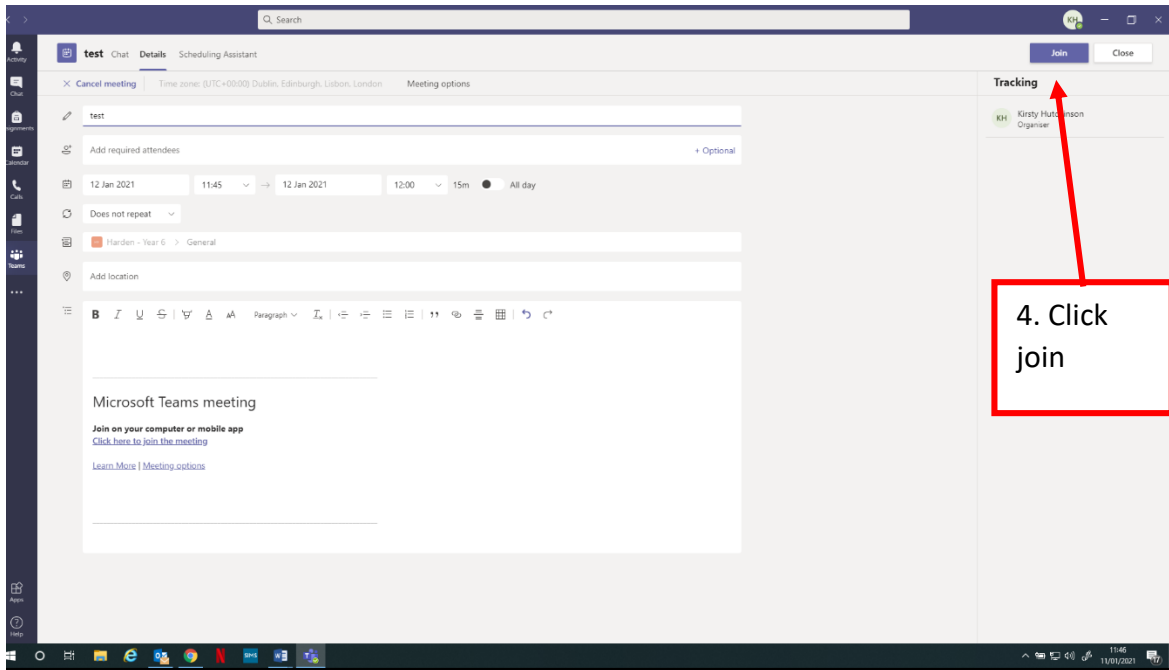


2. Click here to access the teams your child is a member of.



3. Classes or groups your child is a member of will appear here. Click on the group you would like to access.

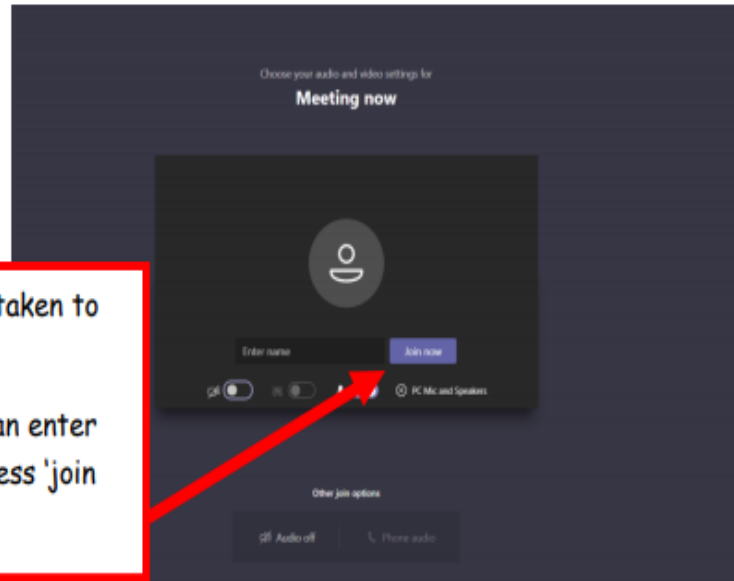
Guide to using Microsoft Teams



Guide to using Microsoft Teams

6. You will then be taken to this page.

You or your child can enter their name then press 'join now'.



If you are using an ipad, tablet or smart phone you can download the 'Teams App' and log in through the app following the directions as above.



Teams app icon